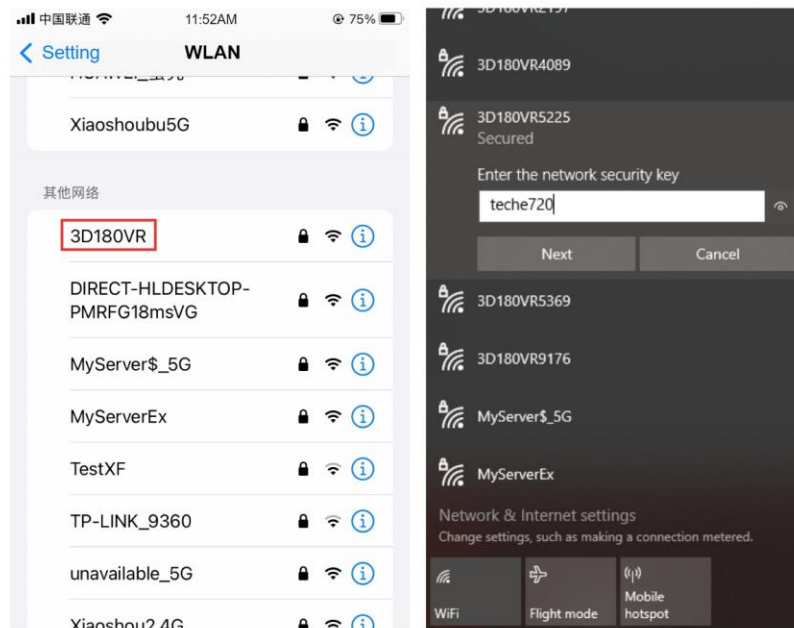


There are three ways to connect the camera

### 1. WiFi connection

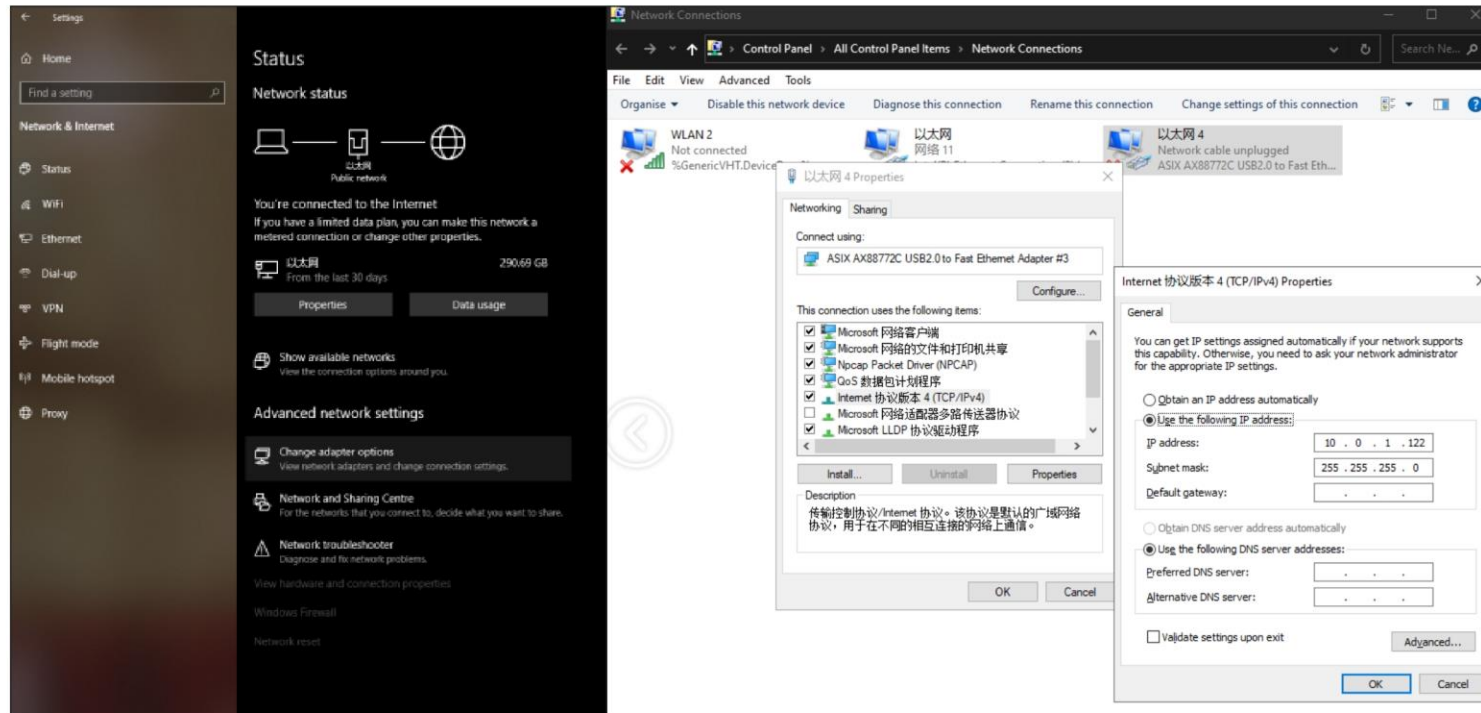
You can search the network whose wifi name starts with 3D180VR through wireless WiFi, and the password is teche720.

After the connection is successful, the camera ip is 10.0.2.1



## 2.Direct connection

The camera can be directly plugged into the network port of the PC through a network cable, and the network ip of the PC needs to be changed to 10.0.1.XXX ip, because the fixed ip of the camera is 10.0.1.1. The detailed operation is as follows



### 3. Connect the router

The camera and the PC can be connected to the same router at the same time. At this time, turn on the PC controller to automatically obtain the camera's IP address. Note: the router needs to be set with dhcp, otherwise it will not be obtained.  
The camera is automatically searched in the controller, and the camera name is 3D180VR